



Color Cards

The Official Guide

A Big Thank You to
Tobias Schilpp



© 2020 Fishbeam Software
Text, Graphics: Yves Pellot
Proofread, Photos: Tobias Schilpp
Publish Code: #200118
www.fishbeam.com

Index

1. Register and Unlock

Learn how to register and unlock Goldfish, so that it works without limitations.

2. Rules

The rules of color cards are simple. Learn how to play it.

3. Trouble and Errors

Learn what you can do if errors occur, if you find bugs or if you have trouble playing Color Cards.

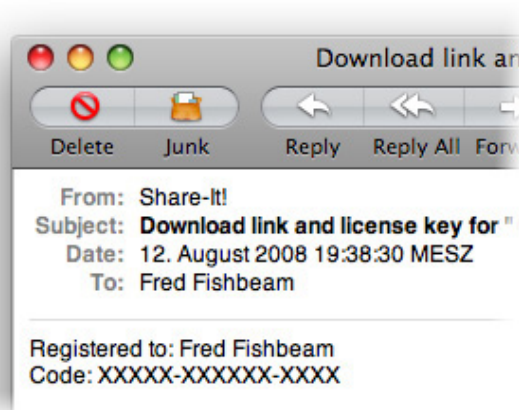
1. Register and Unlock

Learn how to register and unlock Goldfish, so that it works without limitations.

If you play the test version of Color Cards, you will see the following window on startup. Please purchase the full version if you want to play Color Cards.



Click on *Purchase License*. This will lead you to our website where you can purchase Color Cards.



If you have purchased Color Cards, you will receive your serial via e-mail. Copy both, the name at *Registered to* and the serial, and paste it into the corresponding fields. Then click on *Unlock*. Color Cards works without limitations now.

2. Rules

The rules of color cards are simple. Learn how to play it.

At the beginning it is your turn. You can choose between:

- Put down a card with the same color or same number/symbol at the deposit.
- Draw a card from the stack.

After you did that it's the next player's turn. By default the next player is the player on your left, because the game direction is clockwise.

If a player has put down all his cards, he wins the game and the remaining players fight for the second place.

There are some special cards

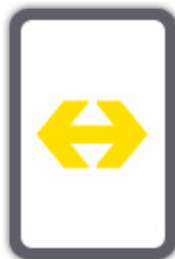
These cards can be of every color and can only put down at the deposit if the same color or symbol is there.



The next player has to draw 2 cards from the stack and can't play his turn.



The next player has to sit out and can't play his turn.



The game direction changes from clockwise to anti-clockwise and vice versa. That happens after

the current player's turn, so that it's his turn again.

There are joker cards

Joker cards have black letters and they can be put down on every other card at the deposit.



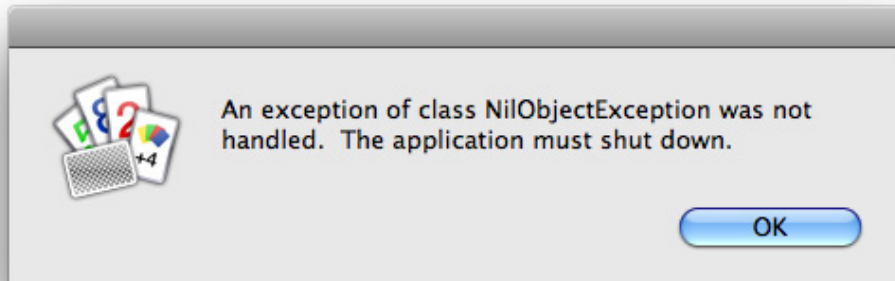
You can choose a new color for the deposit. The next card that is put at the deposit must be of this color.



The next player has to draw 4 cards from the stack and can't play his turn. You can choose a new color for the deposit. The next card that is put at the deposit must be of this color.

3. Trouble and Errors

Learn what you can do if errors occur, if you find bugs or if you have trouble playing Color Cards.



Please contact the support if you see the message *An exception was not handled*. This is a bug of Color Cards. You can contact the support at our support page (<http://www.fishbeam.com/en/support/request.php>).